



GILMARTIN LEY

# Ground and Basement Unit To Let - Cambridge Heath E2

Newly refurbished unit suitable for a variety of uses (STPP)

**280 Cambridge Heath Road,  
Hackney,  
LONDON, E2 9DA**



## Area

Net Internal Area: 64 sq.m. (690 sq.ft.)

## Rent

£25,000 per annum (approx. £2,083 monthly) subject to contract



## Property Description

The unit comprises an end of terrace commercial unit, formerly operating as a minicab office, which has been extensively refurbished throughout with new lighting, rewiring, flooring and glazed shop front.

Arranged over ground and basement floors, the space is configured predominantly as open plan retailing/office space, with rear WC and plumbing for a kitchenette at ground floor. The basement is accessed via an internal staircase and provides well-lit space with additional cupboard housing the electrical meter and wiring.

The unit lends itself to a variety of uses, particularly within the retail, office or leisure industries (STPP). The prospective tenant should check with a planning consultant in respect of their intended use.

## Key considerations:

- > Newly refurbished, prominent unit, with high quality fit-out
- > New lease available
- > Exceptional location in the heart of Hackney / Bethnal Green
- > Suitable for a variety of uses STPP
- > Abundance of local amenities including parks, markets, eateries, pubs, bars and leisure operators
- > Excellent public transport links
- > 150m to Cambridge Heath Station (London Overground / Weaver Line)
- > 5 minutes journey time to London Liverpool Street Station



# Ground and Basement Unit To Let - Cambridge Heath E2

Newly refurbished unit suitable for a variety of uses (STPP)

GILMARTIN LEY

## Accommodation

Net Internal Area: 64 sq.m. (690 sq.ft.)

Accommodation	Area sq.m.	Area sq.ft.	Description and comments
Ground Floor	39.45	424	Open plan retail / office area with rear WC and stairs to basement.
Basement	24.67	265	Open plan basement space, well-lit with excellent floor to ceiling height.

## Property Location

The property is located on the East side of Cambridge Heath Road, approximately 100m North of the intersection with Hackney Road - an exceptional location in the cosmopolitan heart of Hackney. The area is a mixture of residential and commercial accommodation and a highly sort after location for commuters and young professionals.

There is an abundance of local amenities Broadway Market, Mare Street Market, Netil Market, Five Points Brewery, Victoria Park, along with a wide variety of independent retailers, bars, gyms, all day eateries and bars/pubs are all within walking distance from the property.

Cambridge Heath Station (London Overground / Weaver Line) is within 150m of the property with connections into London Liverpool Street in 5 minutes. Day and night bus services provide connections throughout central and inner London.

**2023 Rateable Value** £12000.00

**Estimated Rates Payable** £0 per annum

**Service Charge p.a.** TBC

**Premium** Nil

**Terms** A new fully repairing and insuring lease on terms to be agreed

**Legal Fees:** Each party is to bear its own legal fees

**Local Authority:** London Borough of Hackney

**Viewings:** By prior appointment with Gilmartin Ley, telephone 020 8882 0111

**Further information at:** <https://www.gilmartinley.co.uk/properties/33192>  
Offer Requirements document

**Last Updated:** 29 Jun 2026

Gilmartin Ley for themselves and for the vendor / lessor of the property whose agent they are give notice that: (1) these details are set out as a general outline only for the guidance of intended purchasers or lessees and do not constitute, not constitute part of, an offer or contract; (2) all descriptions, dimensions, reference to condition and necessary permissions for use and occupation, and other details are given without responsibility: any intending purchasers or lessees should not rely on them as statements or representations of fact but must satisfy themselves by inspection or otherwise as to the correctness of each of them; (3) no director or person in the employment of Gilmartin Ley has any authority to make or give any representation or warranty whatever in relation to any of the properties on this website; (4) we have not tested any of the services, such as heating, power supplies, lighting, fire or security alarms etc. serving any of the properties on this website and therefore are unable to confirm that they are in satisfactory working condition or comply with appropriate regulations; (5) all rentals and prices quoted are exclusive of VAT, unless otherwise stated. Gilmartin Ley is a trading name of Gilmartin Ley Limited, registered in England (registered number 2201161). The registered address for Gilmartin Ley Limited is 59c Station Road, Winchmore Hill, London N21 3NB.

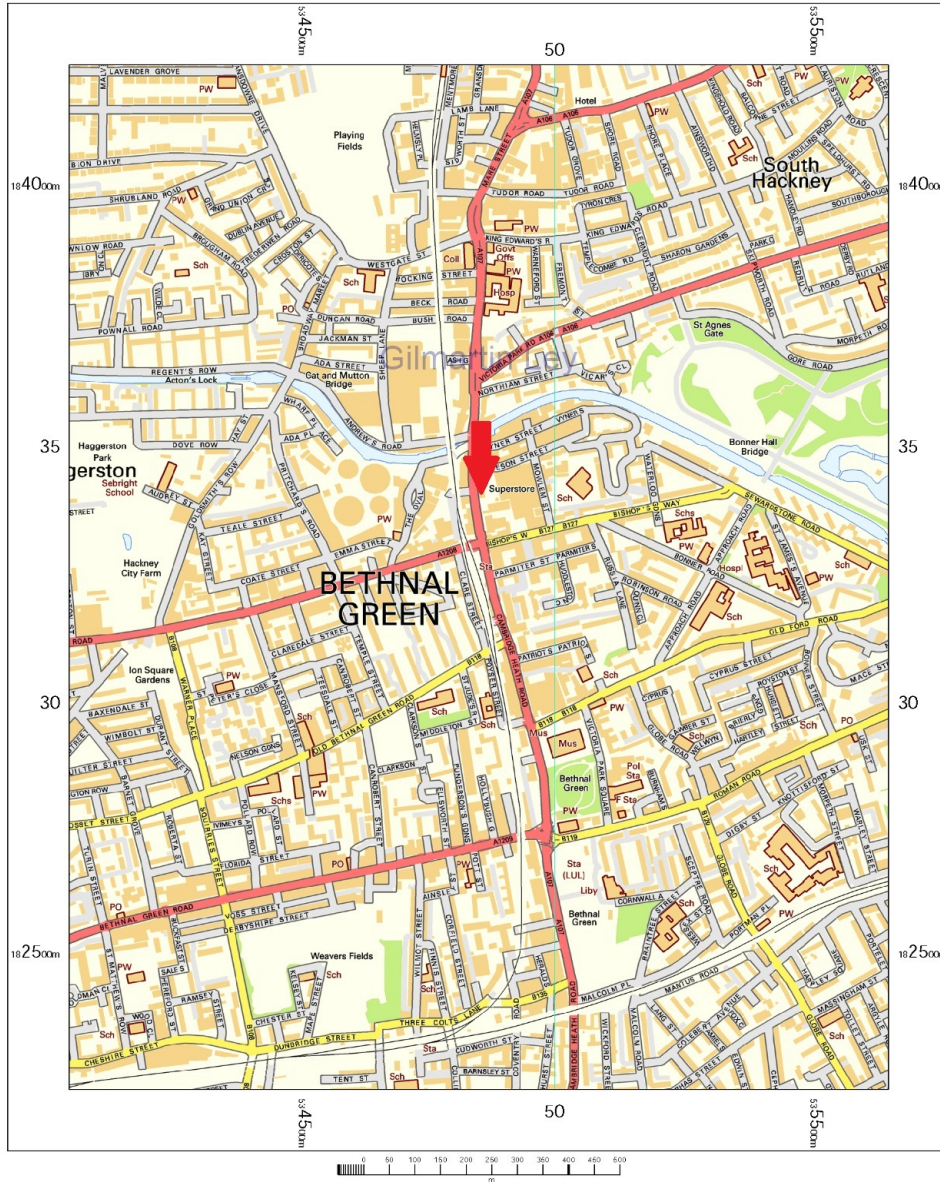


GILMARTIN LEY

# Ground and Basement Unit To Let - Cambridge Heath E2

Newly refurbished unit suitable for a variety of uses (STPP)

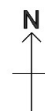
280 Cambridge Heath Road, E2 9DA



OS Streetview  
Tuesday, April 28, 2026, 1D: CM-01275241  
www.centremapslive.co.uk

1:10000 scale print at A4, Centre: 534852 E, 183243 N

Contains OS data © Crown copyright [and database right]



Map supplied by  
Centremaps Live



<https://www.gilmartinley.co.uk/properties/to-rent/shops/hackney/london/e2/33192>

Our ref: 33192

Property Investment and Development Consultants  
Commercial Estate Agents and Valuers  
Chartered Surveyors and Estate Managers  
Property Experts for North London

Gilmartin Ley  
18 Compton Terrace,  
London N1 2UN

Tel: +44 (0)20 8882 0111  
Email: [comms@gilmartinley.co.uk](mailto:comms@gilmartinley.co.uk)  
Website: [www.gilmartinley.co.uk](http://www.gilmartinley.co.uk)

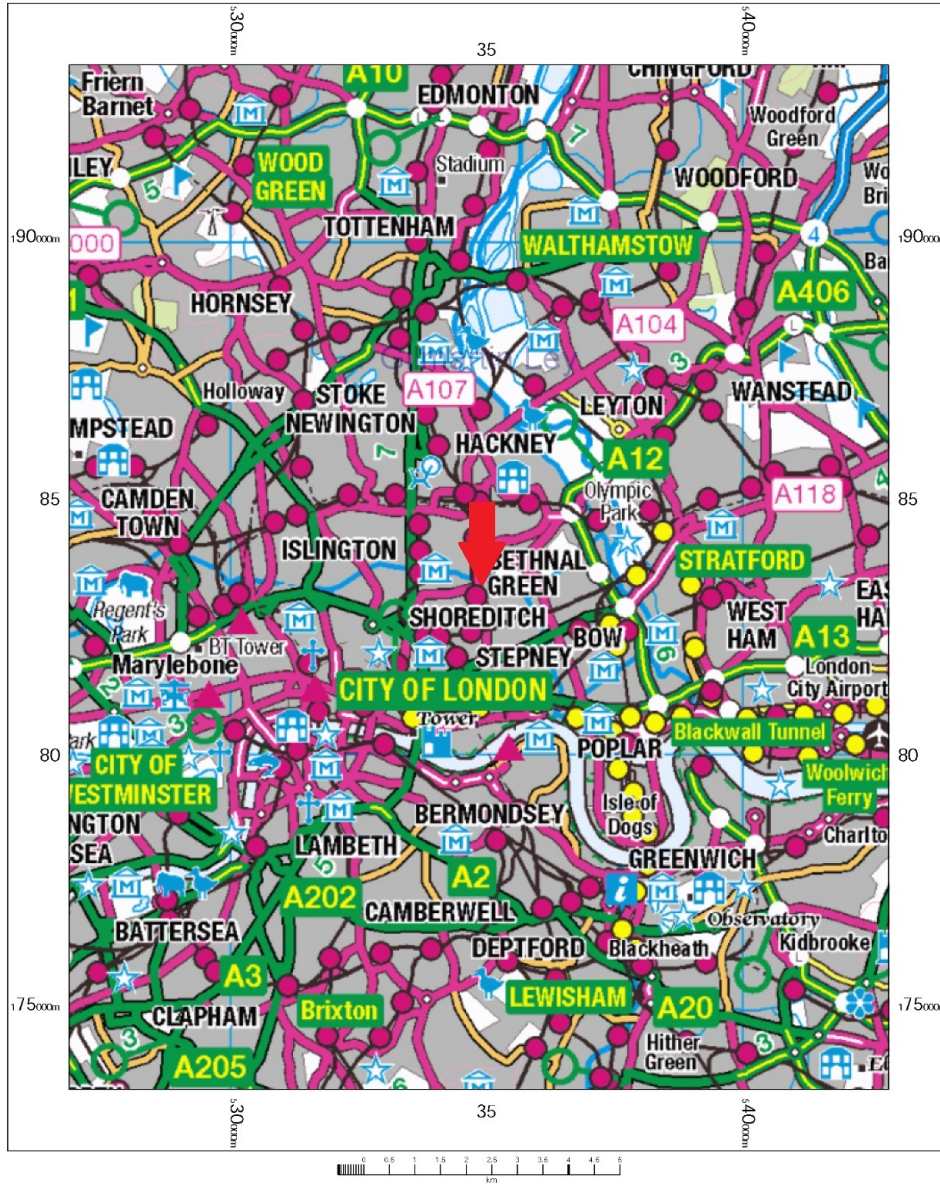


GILMARTIN LEY

# Ground and Basement Unit To Let - Cambridge Heath E2

Newly refurbished unit suitable for a variety of uses (STPP)

280 Cambridge Heath Road, E2 9DA



OS 250k scale raster  
Tuesday, April 28, 2026, ID: CM-01275251  
www.centremapslive.co.uk

1:100000 scale print at A4, Centre: 534855 E, 183461 N

Contains OS data © Crown copyright [and database right]

N  
Map supplied by  
Centremaps Live





GILMARTIN LEY

# Ground and Basement Unit To Let - Cambridge Heath E2

Newly refurbished unit suitable for a variety of uses (STPP)





GILMARTIN LEY

# Ground and Basement Unit To Let - Cambridge Heath E2

Newly refurbished unit suitable for a variety of uses (STPP)





GILMARTIN LEY

# Ground and Basement Unit To Let - Cambridge Heath E2

Newly refurbished unit suitable for a variety of uses (STPP)



<https://www.gilmartinley.co.uk/properties/to-rent/shops/hackney/london/e2/33192>

*Our ref:* 33192

Property Investment and Development Consultants  
Commercial Estate Agents and Valuers  
Chartered Surveyors and Estate Managers  
Property Experts for North London

Gilmartin Ley  
18 Compton Terrace,  
London N1 2UN

Tel: +44 (0)20 8882 0111  
Email: [comms@gilmartinley.co.uk](mailto:comms@gilmartinley.co.uk)  
Website: [www.gilmartinley.co.uk](http://www.gilmartinley.co.uk)