



GILMARTIN LEY

Office / Retail Unit To Let - Edmonton N18

50m to Silver Street Station

**Ground Floor 28 Sterling
Way,
Edmonton,
LONDON, N18 2XZ**



Area

Net Internal Area: 104 sq.m. (1,121 sq.ft.)

Rent

£28,000 per annum (approx. £2,333
monthly) subject to contract



Property Description

The property comprises the ground floor of a mid-terrace mixed use building, arranged over ground, first and second floors.

Consisting of predominantly open plan office accommodation, separate WCs, private office / board room, kitchen and rear store / file room, the ground floor unit is in reasonable condition throughout. The office benefits from electric security shutters, air conditioning, alarm system, perimeter power & data points. The space has the advantage of excellent natural light provided by a central lightwell, as well as a combination of suspended and recessed lighting.

The unit may be suitable for a number of office, retail or alternative uses (STPP).

Key Considerations:

- > New lease available
- > Popular and vibrant North London location
- > North Middlesex Hospital: 500m
- > Tottenham Hotspur Stadium: 1km
- > Pymmes Park: 135m
- > Adjacent to A406 North Circular Road
- > Excellent communications via road and rail
- > Silver Street Station (London Overground / Weaver Line): 50m
- > Great Cambridge Road (A10): 1.4 km
- > Meridian Way (A1055): 1.2 km



GILMARTIN LEY

Office / Retail Unit To Let - Edmonton N18

50m to Silver Street Station

Accommodation

Net Internal Area: 104 sq.m. (1,121 sq.ft.)

Floor	Area sq.m.	Area sq.ft.	Description and comments
Ground floor office	104.21	1,121	Predominantly open plan office accommodation with separate WCs, kitchen, store and meeting room.

Property Location

The subject property is located on the south side of Sterling Way (A406 North Circular Road), approximately 70 metres east of College Close and 105 metres from the main junction with Fore Street (A1010).

Transport links are excellent. The Great Cambridge Road (A10) lies 1.4 km to the west, with the North-South Route / Meridian Way (A1055) is 1.2 km to the east.

Silver Street Overground Station is approximately 50 metres to the west and provides southbound services on the Weaver Line / London Overground, with journey times of around 7 minutes to Seven Sisters and 27 minutes to London Liverpool Street. Northbound services connect to Enfield Town and Cheshunt. Sterling Way and Fore Street are both key bus routes.

The area is a popular and vibrant local shopping destination, featuring a mix of national and independent retailers, professional service offices, supermarkets, cafés and restaurants. Local occupiers in the immediate vicinity include Lidl, Costa Coffee, pharmacies, accountants, solicitors, and various health, hair and beauty businesses.

2023 Rateable Value £13500.00

Estimated Rates Payable £3240 per annum

Service Charge p.a. TBC

Premium Nil

Terms A new lease on terms to be agreed

Legal Fees: Each party is to bear its own legal fees

Local Authority: London Borough of Enfield

Viewings: By prior appointment with Gilmartin Ley, telephone 020 8882 0111

Further information at: <https://www.gilmartinley.co.uk/properties/32370>

Floorplans

Offer Requirements Document

Last Updated: 13 Jun 2025

Gilmartin Ley for themselves and for the vendor / lessor of the property whose agent they are give notice that:

(1) these details are set out as a general outline only for the guidance of intended purchasers or lessees and do not constitute, not constitute part of, an offer or contract; (2) all descriptions, dimensions, reference to condition and necessary permissions for use and occupation, and other details are given without responsibility: any intending purchasers or lessees should not rely on them as statements or representations of fact but must satisfy themselves by inspection or otherwise as to the correctness of each of them; (3) no director or person in the employment of Gilmartin Ley has any authority to make or give any representation or warranty whatever in relation to any of the properties on this website; (4) we have not tested any of the services, such as heating, power supplies, lighting, fire or security alarms etc. serving any of the properties on this website and therefore are unable to confirm that they are in satisfactory working condition or comply with appropriate regulations; (5) all rentals and prices quoted are exclusive of VAT, unless otherwise stated. Gilmartin Ley is a trading name of Gilmartin Ley Limited, registered in England (registered number 2201161). The registered address for Gilmartin Ley Limited is 59c Station Road, Winchmore Hill, London N21 3NB.

<https://www.gilmartinley.co.uk/properties/to-rent/offices/edmonton/london/n18/32370>

Our ref: 32370

Property Investment and Development Consultants
Commercial Estate Agents and Valuers
Chartered Surveyors and Estate Managers
Property Experts for North London

Gilmartin Ley
18 Compton Terrace,
London N1 2UN

Tel: +44 (0)20 8882 0111
Email: comms@gilmartinley.co.uk
Website: www.gilmartinley.co.uk



GILMARTIN LEY

Office / Retail Unit To Let - Edmonton N18

50m to Silver Street Station

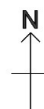
28 Sterling Way, N18 2XZ



OS Streetview
Monday, February 17, 2025, 11:02:07 AM
www.centremapslive.co.uk

1:10000 scale print at A4, Centre: 533995 E, 192398 N

Contains OS data © Crown copyright [and database right]



Map supplied by
Centremaps Live



<https://www.gilmartinley.co.uk/properties/to-rent/offices/edmonton/london/n18/32370>

Our ref: 32370

Property Investment and Development Consultants
Commercial Estate Agents and Valuers
Chartered Surveyors and Estate Managers
Property Experts for North London

Gilmartin Ley
18 Compton Terrace,
London N1 2UN

Tel: +44 (0)20 8882 0111
Email: comms@gilmartinley.co.uk
Website: www.gilmartinley.co.uk

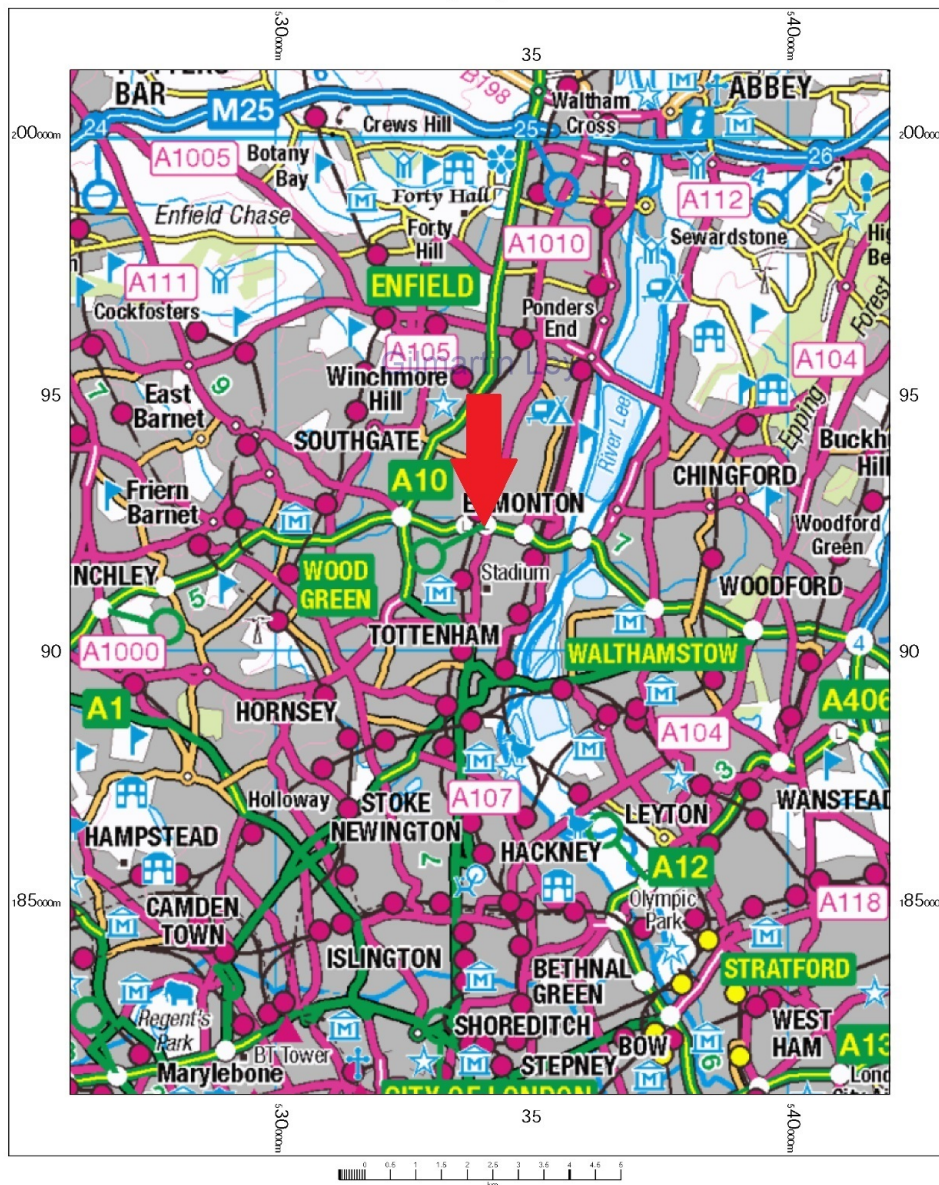


GILMARTIN LEY

Office / Retail Unit To Let - Edmonton N18

50m to Silver Street Station

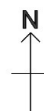
28 Sterling Way, N18 2XZ



OS 250k scale raster
Monday, February 17, 2025, ID: CM-01207773
www.centremapslive.co.uk

1:100000 scale print at A4, Centre: 533995 E, 191336 N

Contains OS data © Crown copyright [and database right]



Map supplied by
Centremaps Live

<https://www.gilmartinley.co.uk/properties/to-rent/offices/edmonton/london/n18/32370>

Our ref: 32370

Property Investment and Development Consultants
Commercial Estate Agents and Valuers
Chartered Surveyors and Estate Managers
Property Experts for North London

Gilmartin Ley
18 Compton Terrace,
London N1 2UN

Tel: +44 (0)20 8882 0111
Email: comms@gilmartinley.co.uk
Website: www.gilmartinley.co.uk

Office / Retail Unit To Let - Edmonton N18

50m to Silver Street Station







