



GILMARTIN LEY

# Warehouse / Trade Counter For Sale - Harlow CM19

**Freehold with vacant possession**

**Unit 7 Ash Industrial Estate  
Flex Meadow,**

**HARLOW, CM19 5TJ**



## Price

Offers in excess of £650,000 subject to contract



## Property Description

The property comprises a mid-terrace steel portal framed industrial warehouse arranged over ground and mezzanine levels, with a gross internal area of 464.7 sq.m (5,003 sq.ft).

The ground floor space provides predominantly warehousing accommodation, along with reception/showroom, office room, kitchen/breakout area and male & female WCs.

Loading to the unit is via a single electronically operated roller shutter door.

The first / mezzanine floor comprises a large office room and mezzanine storage.

The forecourt provides for circa 8 car parking spaces and access for loading.

## Key considerations:

- > Highly desirable and strategic location
- > Gross Internal Area: 464.7 sq.m (5,003 sq.ft)
- > Generous forecourt yard
- > Eaves Height: 4.96m, Apex: 5.93m
- > Excellent transport communications:
- > Junction 7 A414 / M11 Intersection: 3.2 miles (5 km) to the east
- > Junction 27 M25 / M11 Intersection: 6.2 miles (10 km) to the south
- > A414 / A10 Intersection: 4.0 miles (6.5 km) to the west
- > Harlow Town Rail Station: 1.8 miles (3 km) to the north east



GILMARTIN LEY

# Warehouse / Trade Counter For Sale - Harlow CM19

**Freehold with vacant possession**

## Accommodation

Gross Internal Area: 465 sq.m. (5,001 sq.ft.)

Unit	Area sq.m.	Area sq.ft.	Description and comments
Ground Floor	279.01	3,003	Warehouse, reception/showroom, office room, kitchen/breakout area and male & female WCs
First Floor	185.77	1,999	Office and mezzanine storage

## Property Location

The property is located on Ash Industrial Estate, within the well-established industrial area of The Pinnacles, approximately 150m from the intersections of Flex Meadow, Elizabeth Way and Third Avenue.

Harlow town centre is approximately 1.0 mile (1.75 km) to the east of the property.

The property has excellent road transport connections, with easy access to the A1025 and A1169, which both link to the A414 and the M11 Motorway (Junction 7), approximately 3.2 miles (5 km) south-east of the property. The A414 also provides direct access to the A10, approximately 4.0 miles (6.5 km) and to the A1, approximately 12.4 miles (20 km) to the north-west of the property.

**2023 Rateable Value** £27500.00

**Estimated Rates Payable** £13200 per annum

**Terms** Freehold for sale with vacant possession.

The property is elected for VAT.

**Legal Fees:** Each party is to bear its own legal fees

**Local Authority:** Harlow District Council

**Viewings:** By prior appointment with Gilmartin Ley, telephone 020 8882 0111

**Further information at:** <https://www.gilmartinley.co.uk/properties/31370>  
Offer Requirements Document

**Last Updated:** 27 Jan 2026

Gilmartin Ley for themselves and for the vendor / lessor of the property whose agent they are give notice that:

(1) these details are set out as a general outline only for the guidance of intended purchasers or lessees and do not constitute, not constitute part of, an offer or contract; (2) all descriptions, dimensions, reference to condition and necessary permissions for use and occupation, and other details are given without responsibility: any intending purchasers or lessees should not rely on them as statements or representations of fact but must satisfy themselves by inspection or otherwise as to the correctness of each of them; (3) no director or person in the employment of Gilmartin Ley has any authority to make or give any representation or warranty whatever in relation to any of the properties on this website; (4) we have not tested any of the services, such as heating, power supplies, lighting, fire or security alarms etc. serving any of the properties on this website and therefore are unable to confirm that they are in satisfactory working condition or comply with appropriate regulations; (5) all rentals and prices quoted are exclusive of VAT, unless otherwise stated. Gilmartin Ley is a trading name of Gilmartin Ley Limited, registered in England (registered number 2201161). The registered address for Gilmartin Ley Limited is 59c Station Road, Winchmore Hill, London N21 3NB.



GILMARTIN LEY

# Warehouse / Trade Counter For Sale - Harlow CM19

Freehold with vacant possession

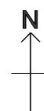
Unit 7 Ash Ind Est, CM19 5TJ



OS MasterMap 1250/2500/10000 scale  
Friday, September 13, 2024, ID: CM-01184636  
[www.centremapslive.co.uk](http://www.centremapslive.co.uk)

1:1250 scale print at A4, Centre: 542625 E, 209075 N

©Crown Copyright Ordnance Survey, Licence no.  
AC0000849896



Map supplied by  
Centremaps Live

<https://www.gilmartinley.co.uk/properties/for-sale/warehouses-b8/harlow/harlow/cm19/31370>

Our ref: 31370

Property Investment and Development Consultants  
Commercial Estate Agents and Valuers  
Chartered Surveyors and Estate Managers  
Property Experts for North London

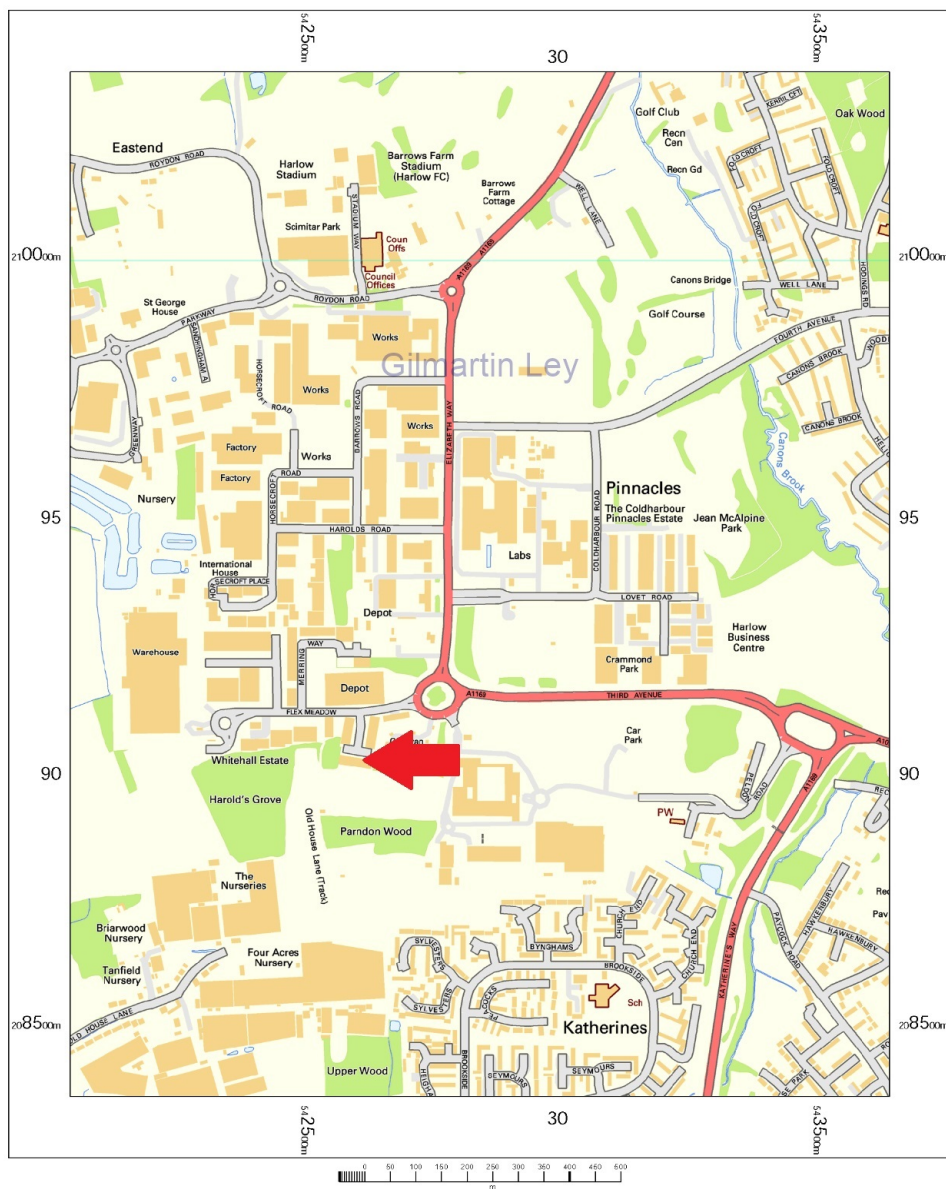
Gilmartin Ley  
18 Compton Terrace,  
London N1 2UN

Tel: +44 (0)20 8882 0111  
Email: [comms@gilmartinley.co.uk](mailto:comms@gilmartinley.co.uk)  
Website: [www.gilmartinley.co.uk](http://www.gilmartinley.co.uk)

# Warehouse / Trade Counter For Sale - Harlow CM19

Freehold with vacant possession

Unit 7 Ash Ind Est, CM19 5TJ



OS Streetview  
Friday, September 13, 2024, ID: CM-01184639  
[www.centremapslive.co.uk](http://www.centremapslive.co.uk)

1:10000 scale print at A4, Centre: 542849 E, 209368 N

Contains OS data © Crown copyright [and database right]

N  
Map supplied by  
Centremaps Live





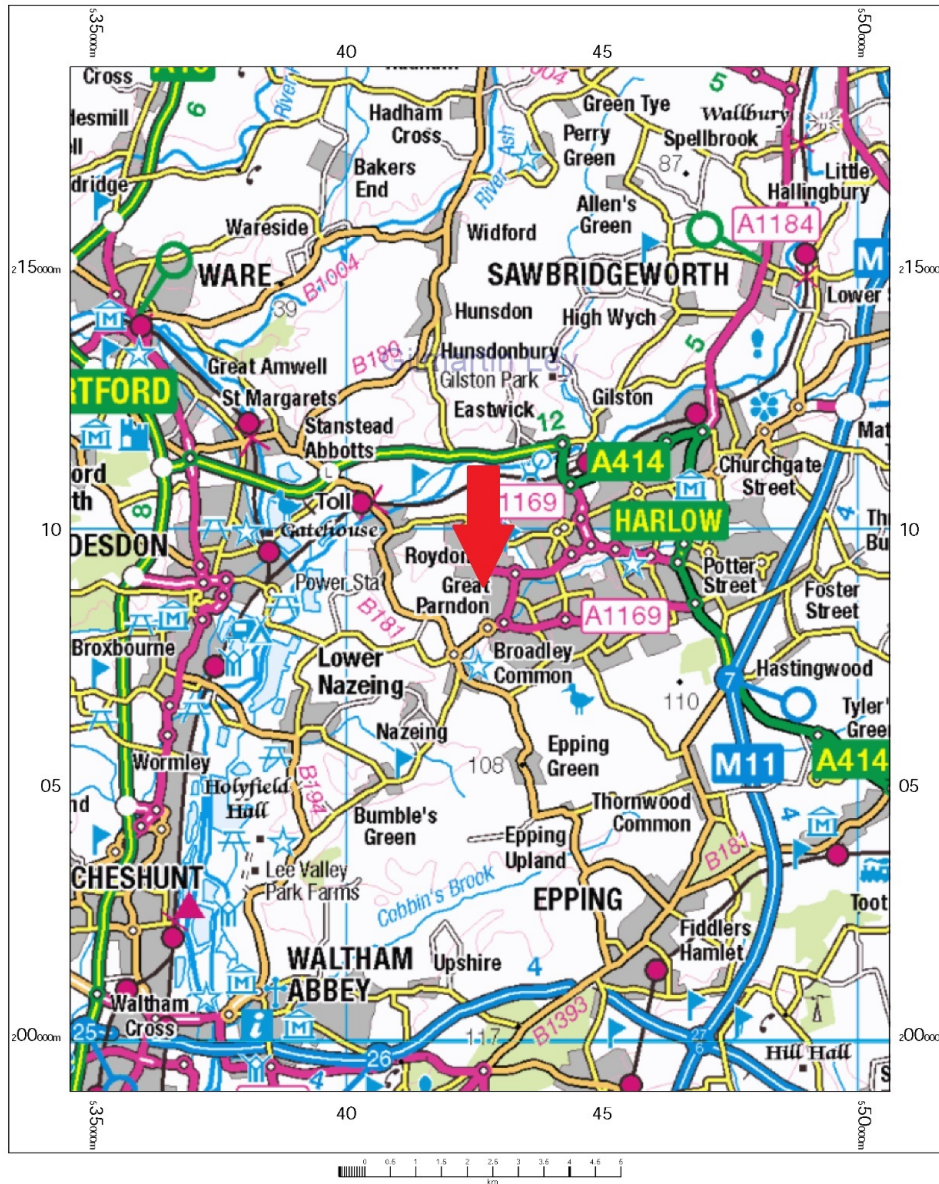


GILMARTIN LEY

# Warehouse / Trade Counter For Sale - Harlow CM19

Freehold with vacant possession

Unit 7 Ash Ind Est, CM19 5TJ



OS 250k scale raster  
Friday, September 13, 2024, ID: CM-01184641  
[www.centremapslive.co.uk](http://www.centremapslive.co.uk)

1:100000 scale print at A4, Centre: 542613 E, 209020 N

Contains OS data © Crown copyright [and database right]



Map supplied by  
Centremaps Live





GILMARTIN LEY

# Warehouse / Trade Counter For Sale - Harlow CM19

Freehold with vacant possession



<https://www.gilmartinley.co.uk/properties/for-sale/warehouses-b8/harlow/harlow/cm19/31370>

*Our ref: 31370*

Property Investment and Development Consultants  
Commercial Estate Agents and Valuers  
Chartered Surveyors and Estate Managers  
Property Experts for North London

Gilmartin Ley  
18 Compton Terrace,  
London N1 2UN

Tel: +44 (0)20 8882 0111  
Email: [comms@gilmartinley.co.uk](mailto:comms@gilmartinley.co.uk)  
Website: [www.gilmartinley.co.uk](http://www.gilmartinley.co.uk)



# Warehouse / Trade Counter For Sale - Harlow CM19

Freehold with vacant possession



# Warehouse / Trade Counter For Sale - Harlow CM19

Freehold with vacant possession





# Warehouse / Trade Counter For Sale - Harlow CM19

Freehold with vacant possession

